

TRIBUNALE DI LATINA RGE 60.2023

RILIEVO FOTOGRAFICO IMMOBILE IN VIA S. PIATTELLA 1 – NCEU Latina Foglio 117 particella 243 subalterno 6



Fig. 1 Ingresso su portone condominiale in via S. Piattella n° 1



Fig. 2 Particolare ingresso condominiale



Fig. 3 Particolare interno androne scala condominiale (corpo "A")



Fig. 4-5 Particolare scala condominiale e vano ascensore

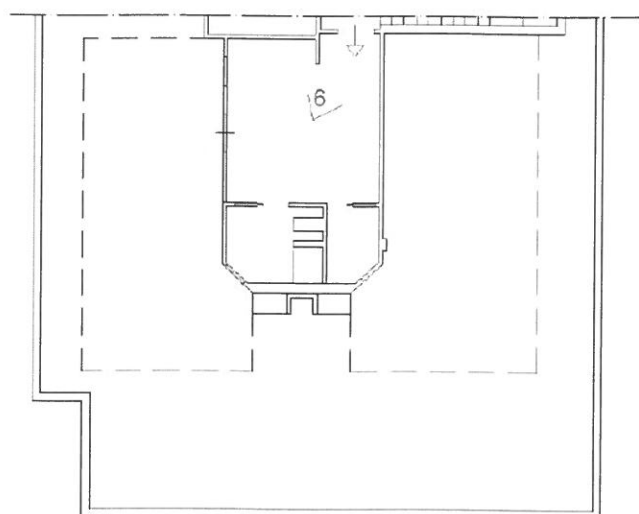
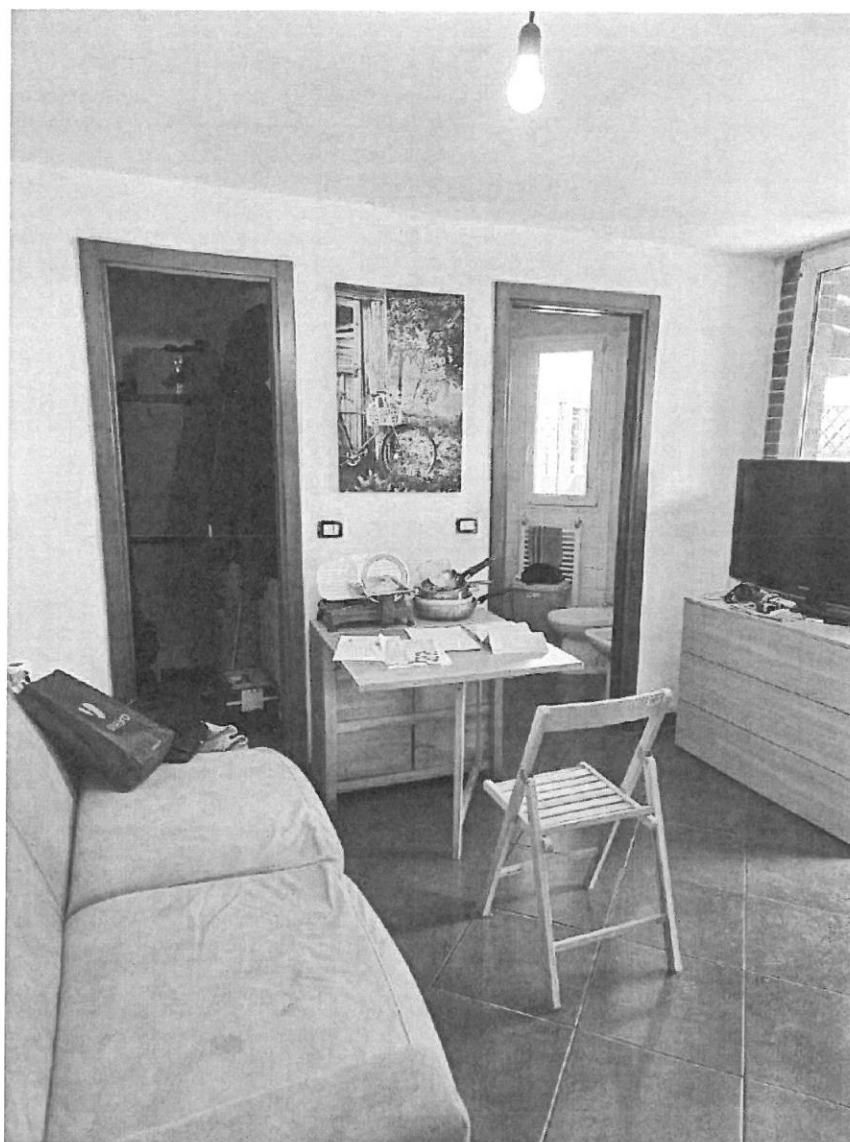


Fig. 6 Particolare vano unico (adibito a cucina/soggiorno/camera)

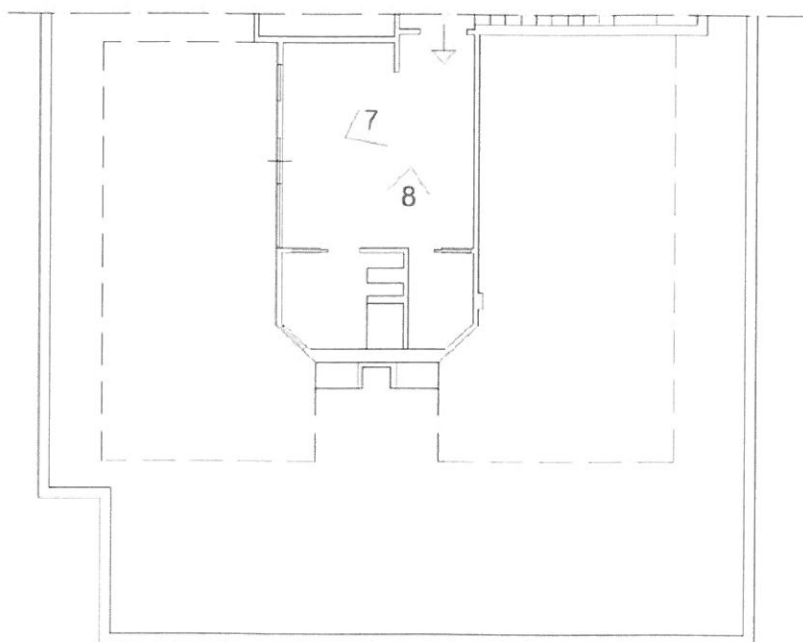
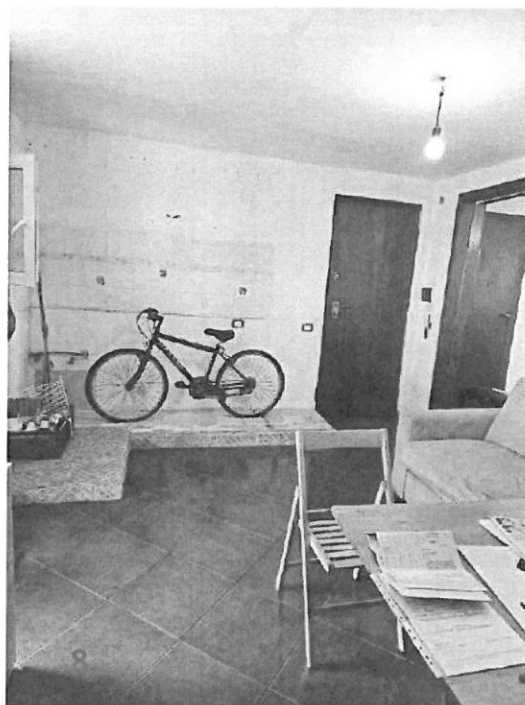
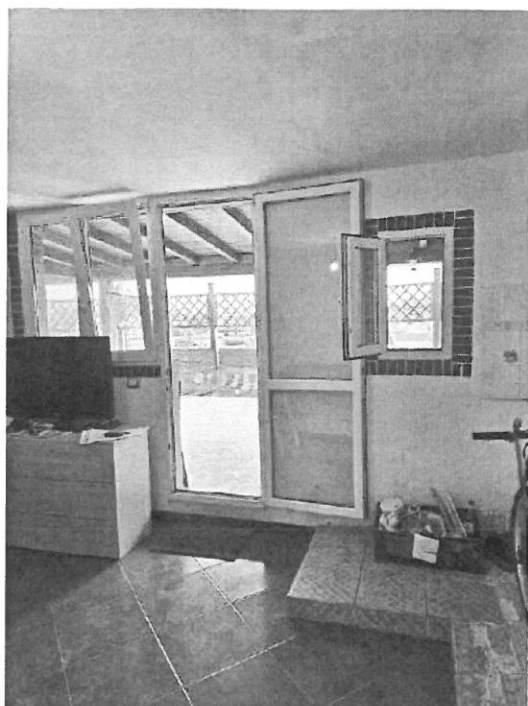


Fig. re 7 e 8. Particolari interni vano unico (visibile l'angolo cottura dove prima era ubicato il bagno)

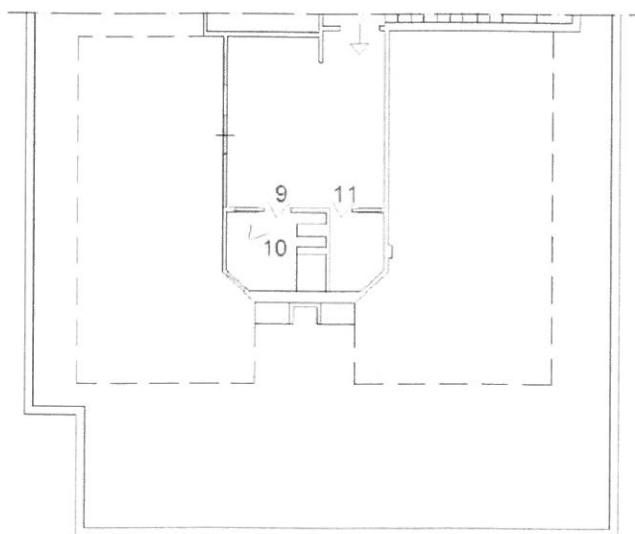
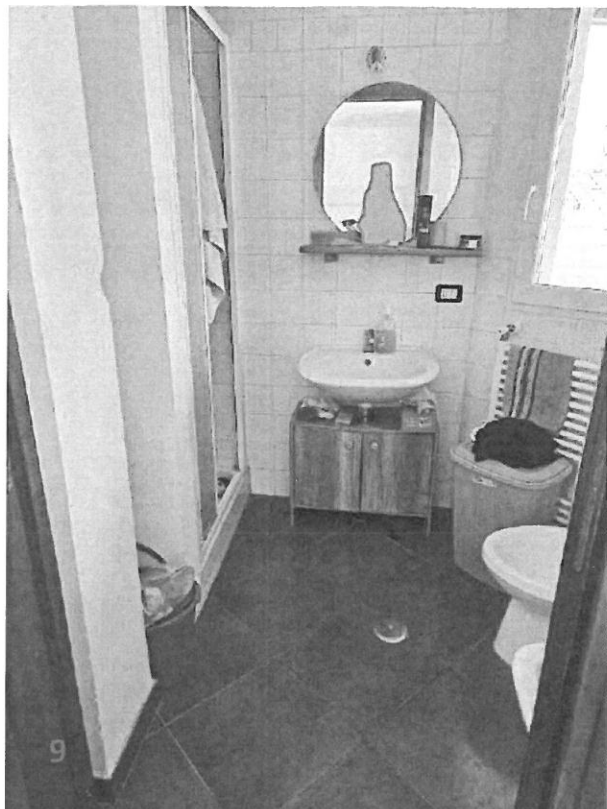


Fig.re 9-10-11 Particolare servizio igienico e ripostiglio (evidenziazione delle infiltrazioni all'intradosso del solaio)

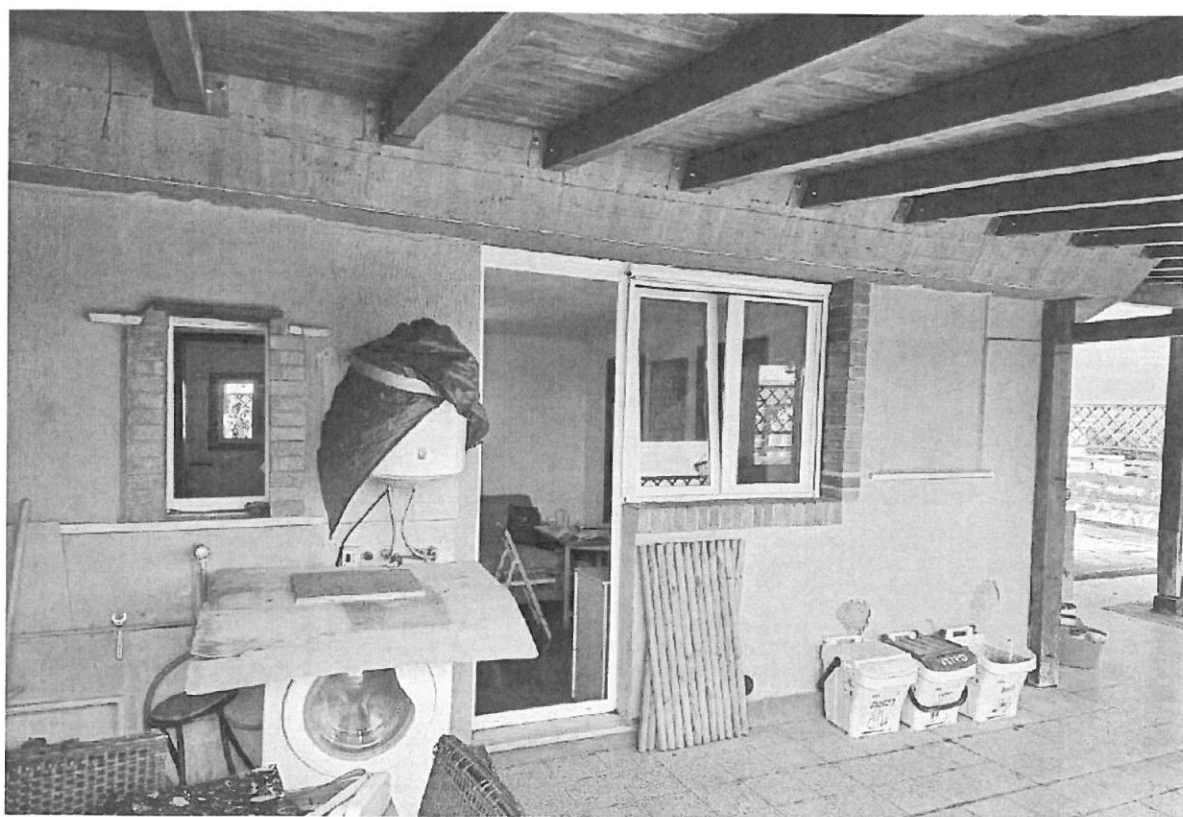


Fig. 12. Particolare vista uscita terrazzo ad uso esclusivo

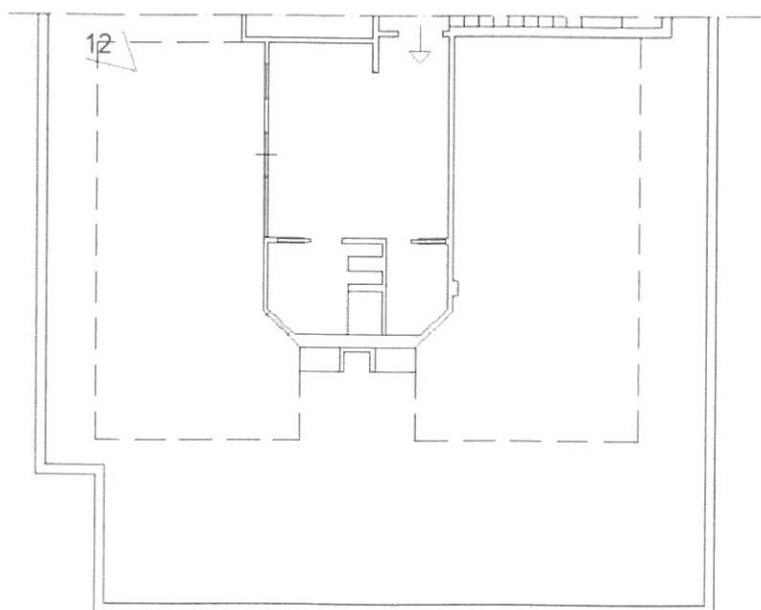
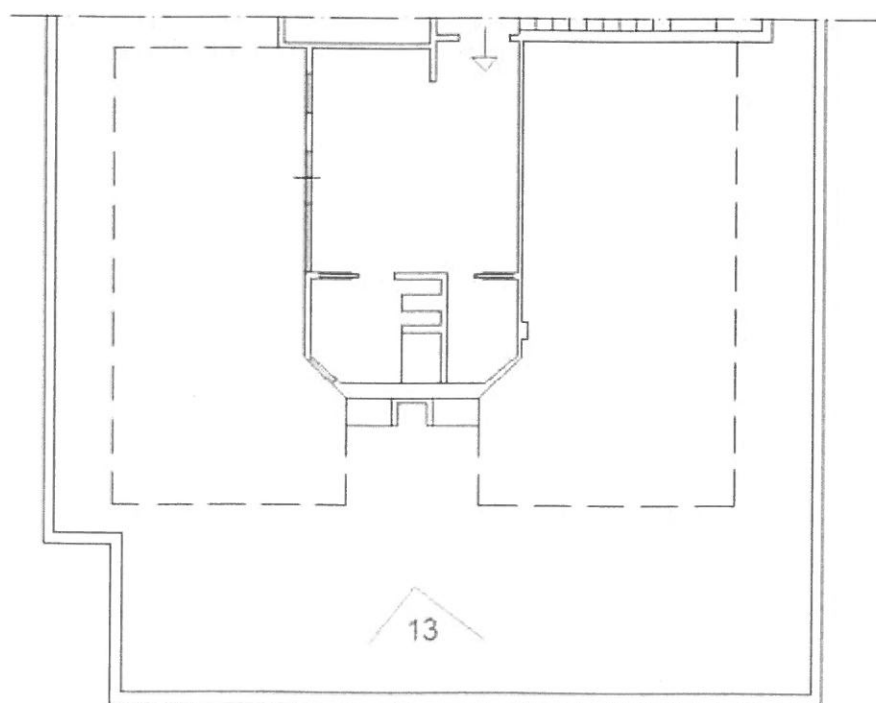




Fig. 13. Vista frontale delle due coperture a tettoia con particolare zona BBQ



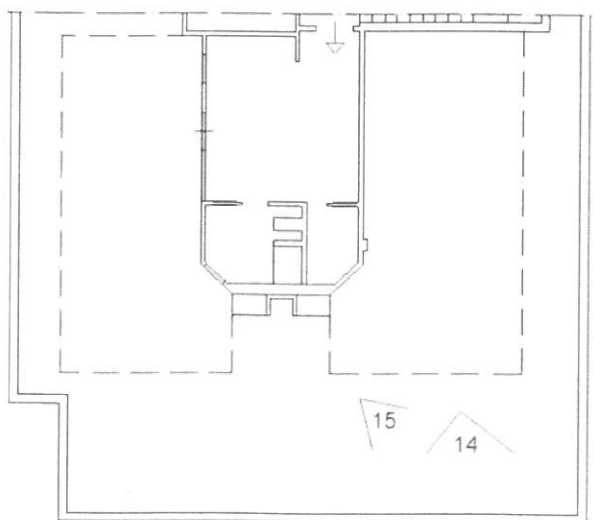
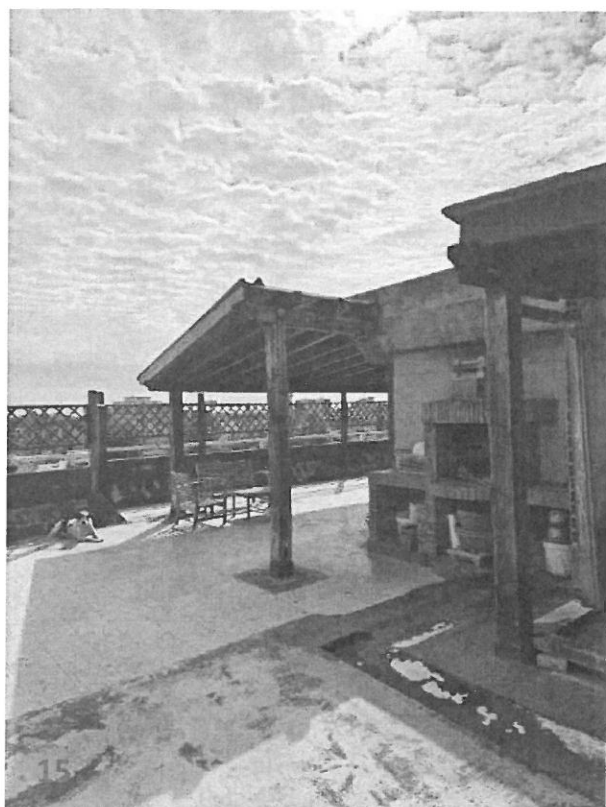
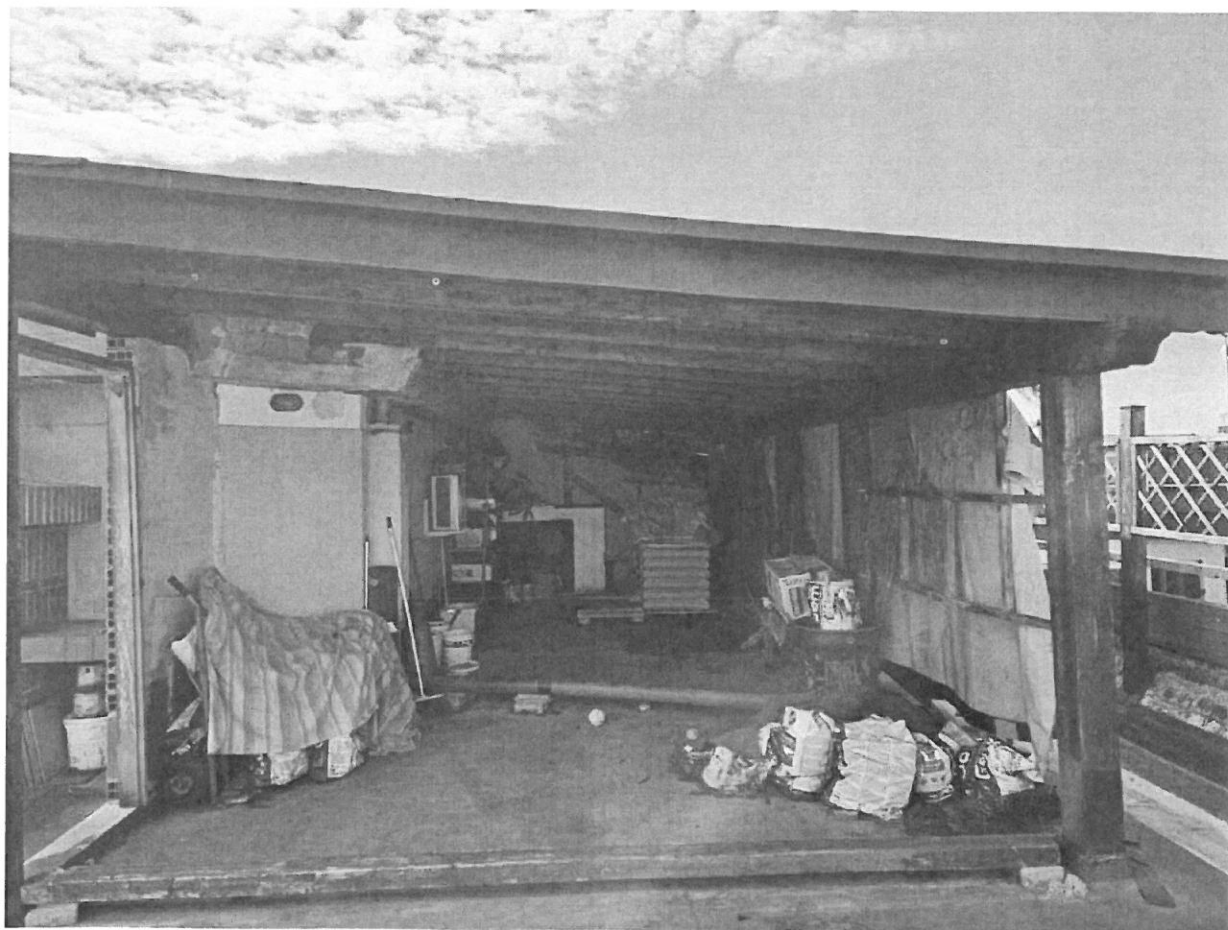
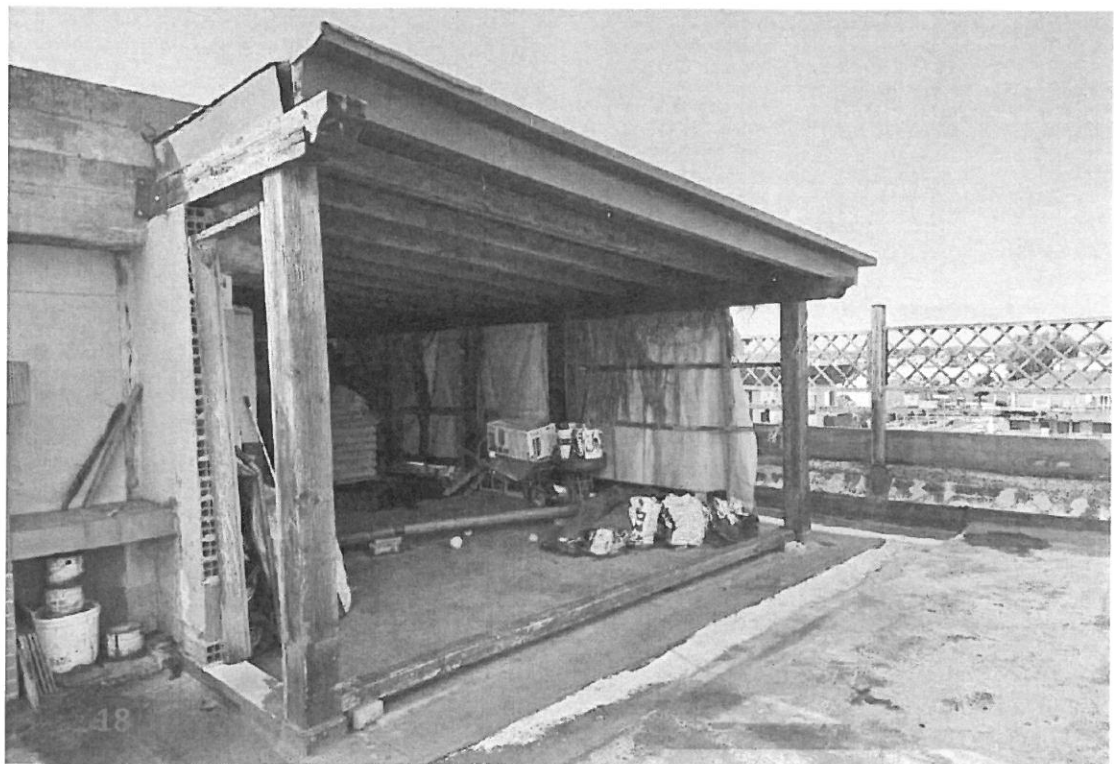
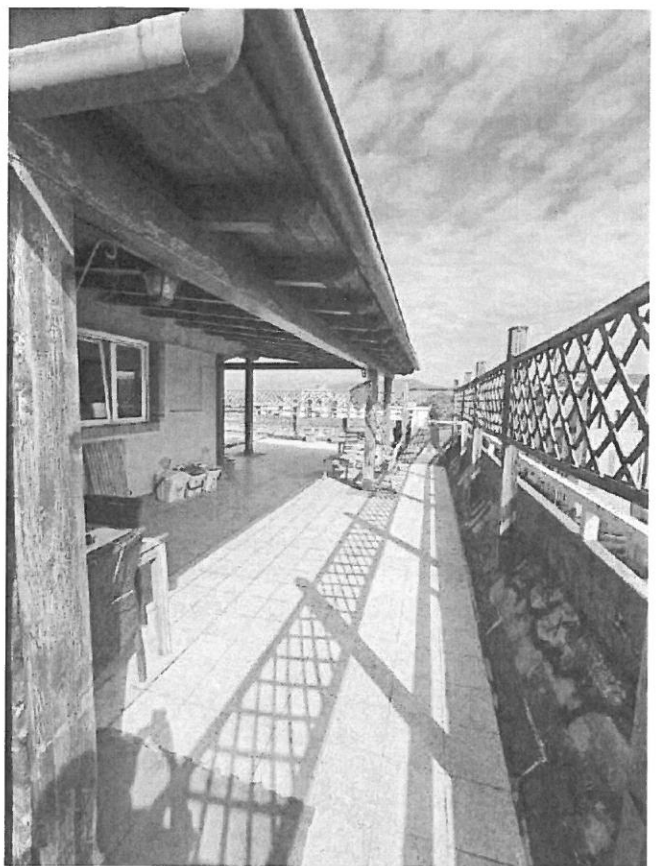
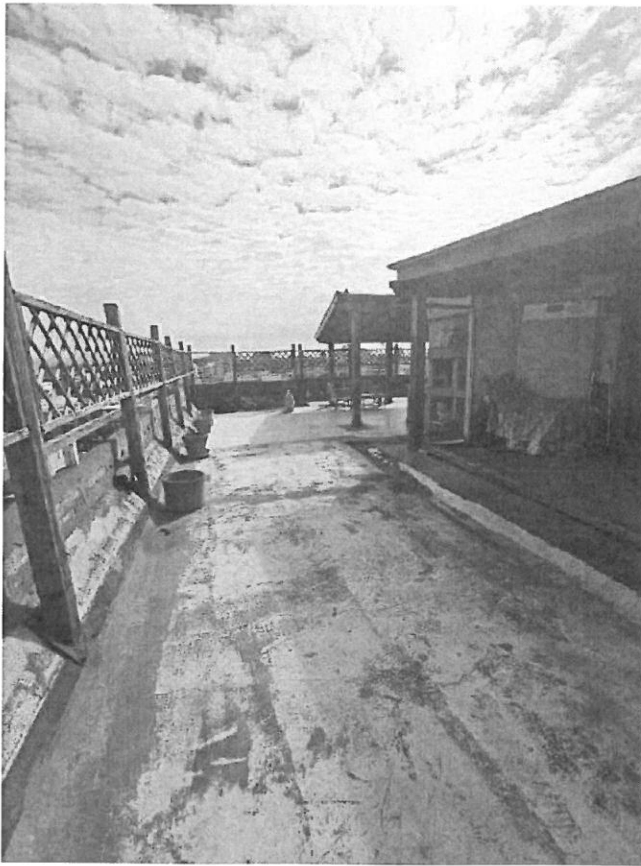


Fig.re 14 e 15. Particolare zona tettoia 2 ed esterni del terrazzo



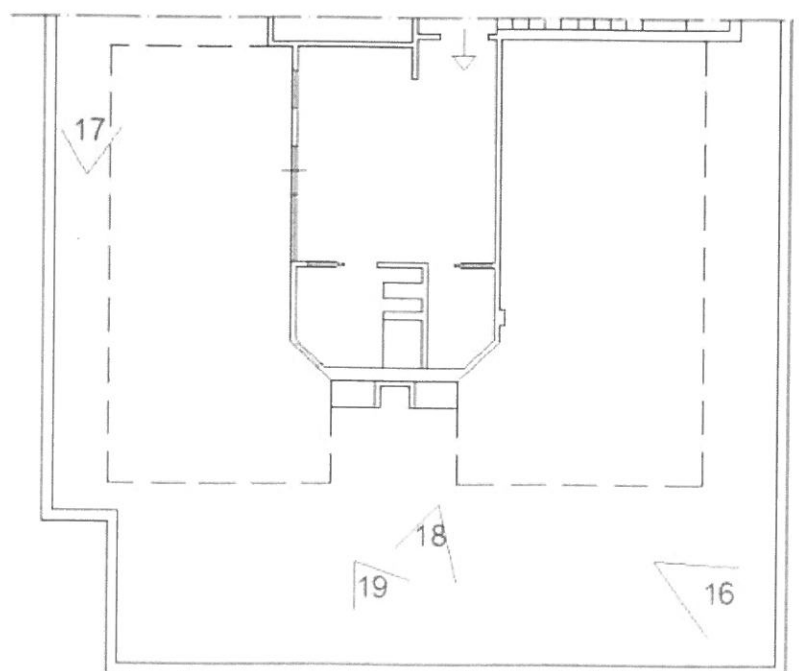
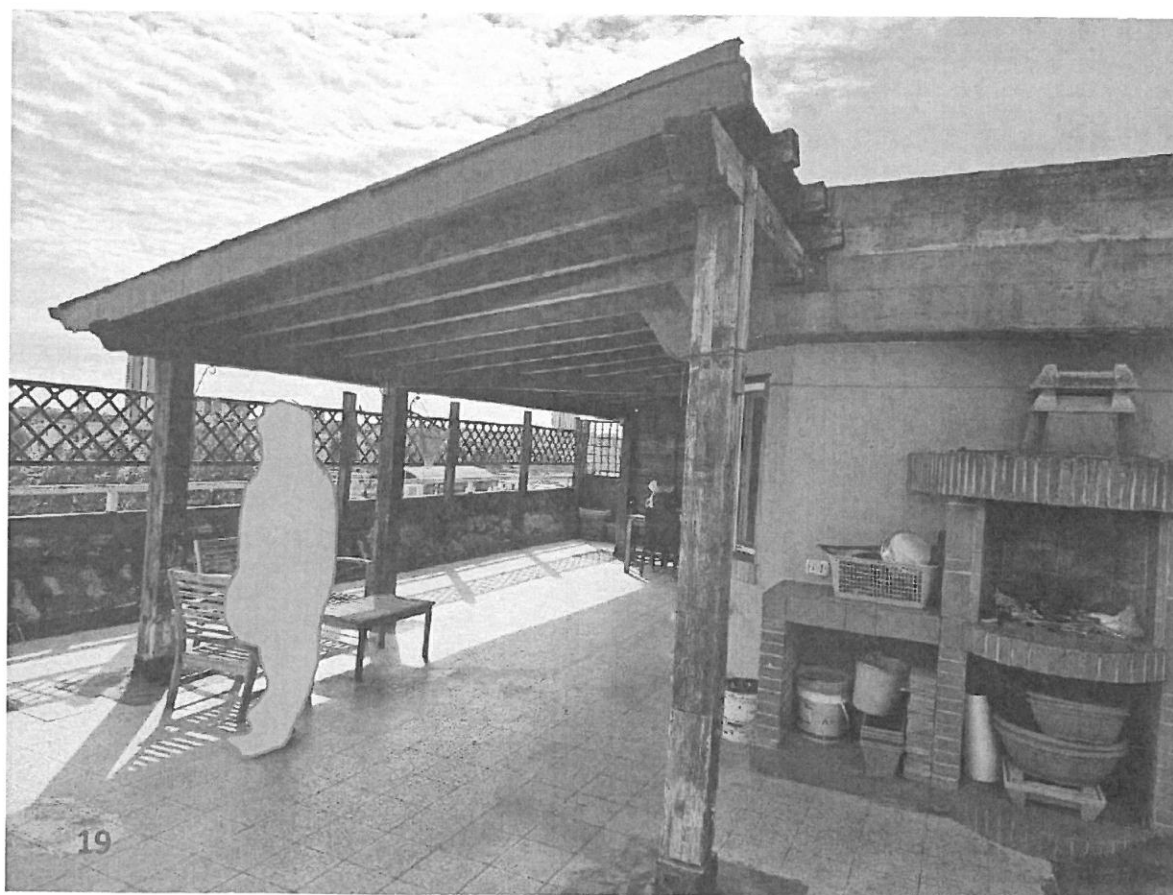


Fig.re 16-17-18-19. Particolare esterni della copertura