

Foto 1 – Vista esterna fabbricato da Via Vittorio Alfieri civico 43



Foto 2 – Vista esterna magazzino/locale di deposito (attualmente adibito a palestra)







Foto 3 – Vista esterna annesso servizio WC (attualmente adibito a cantina)



Foto 4 – Vista esterna d'insieme magazzino e annesso servizio esterno





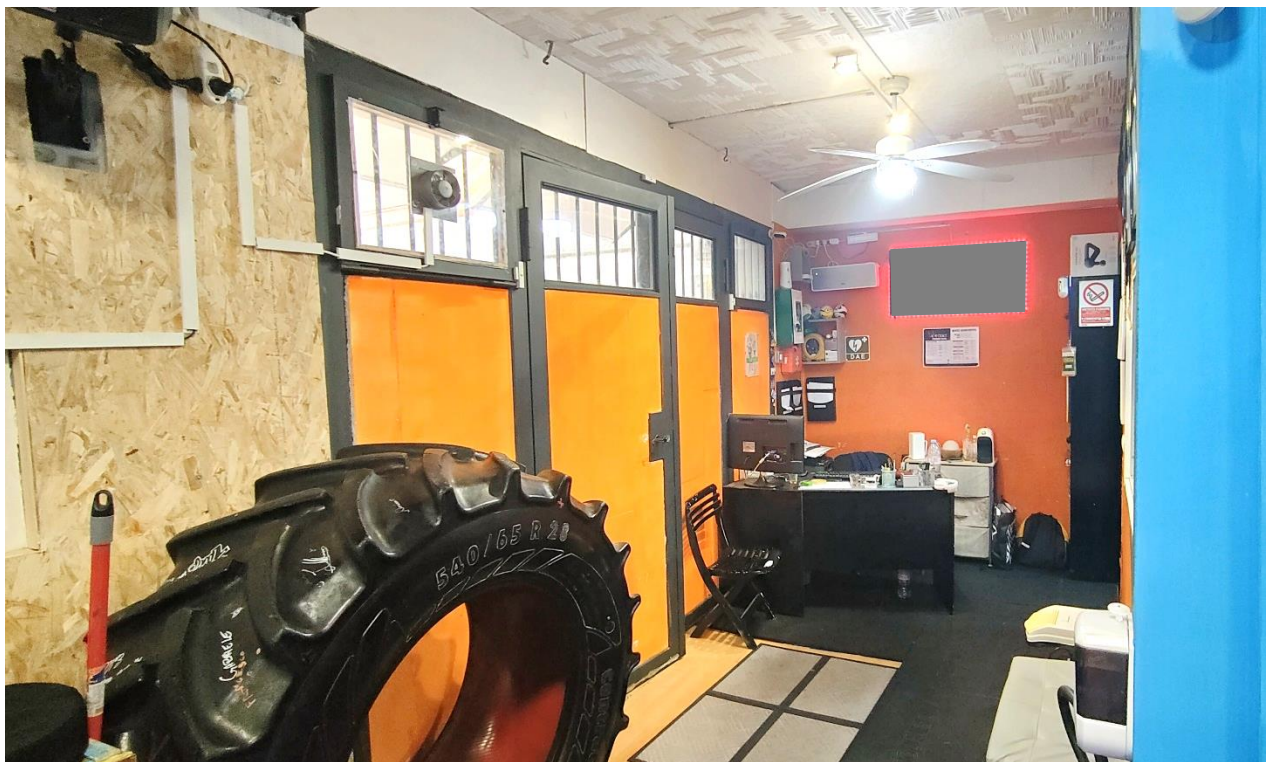


Foto 5 – Ingresso/ufficio

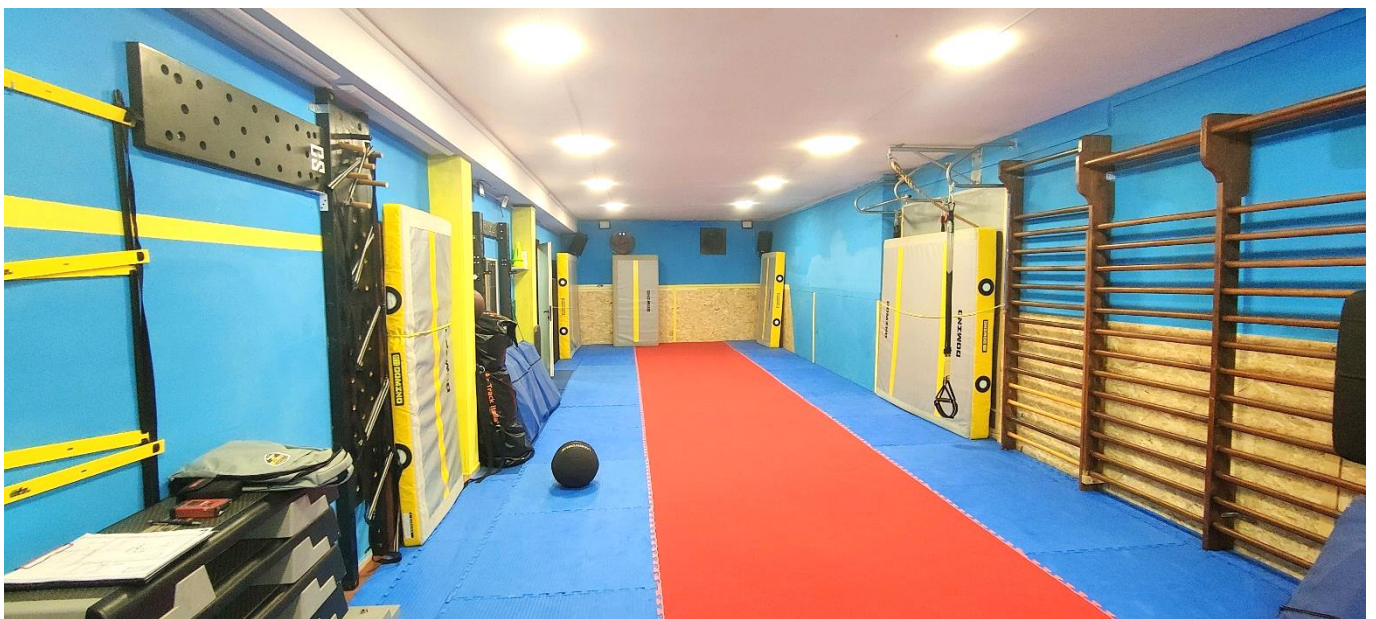


Foto 6 – Locale 1 (palestra)





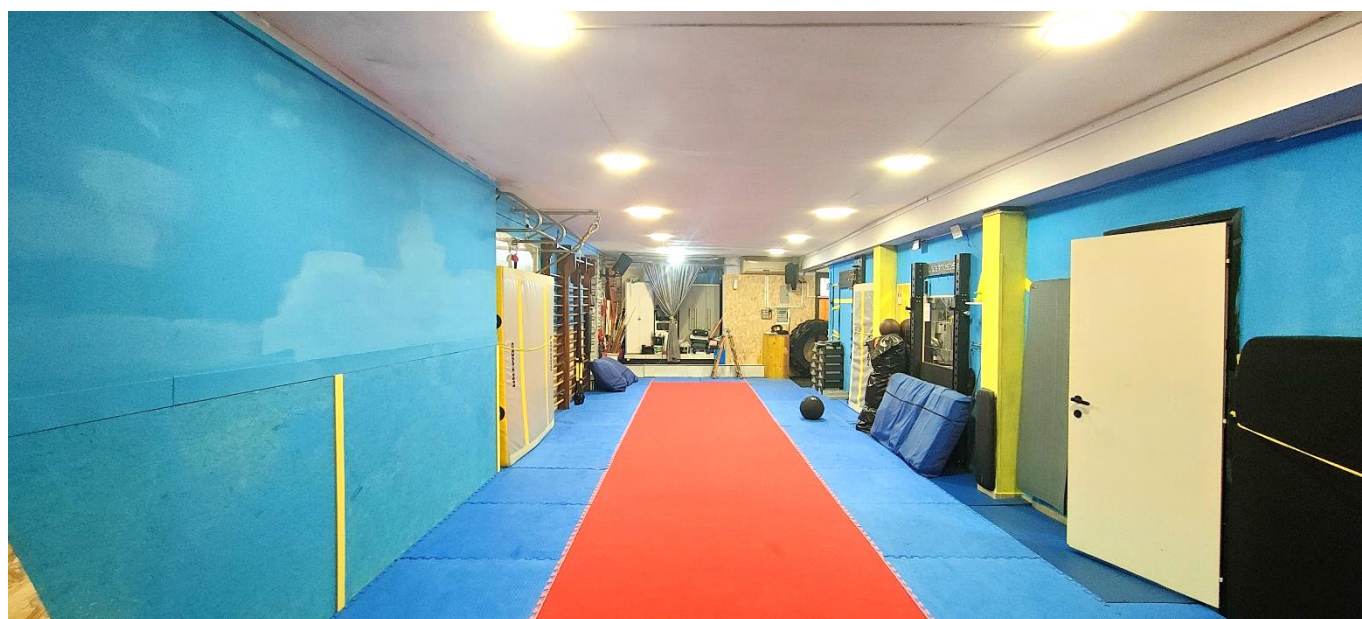


Foto 7 – Locale 1 (palestra)

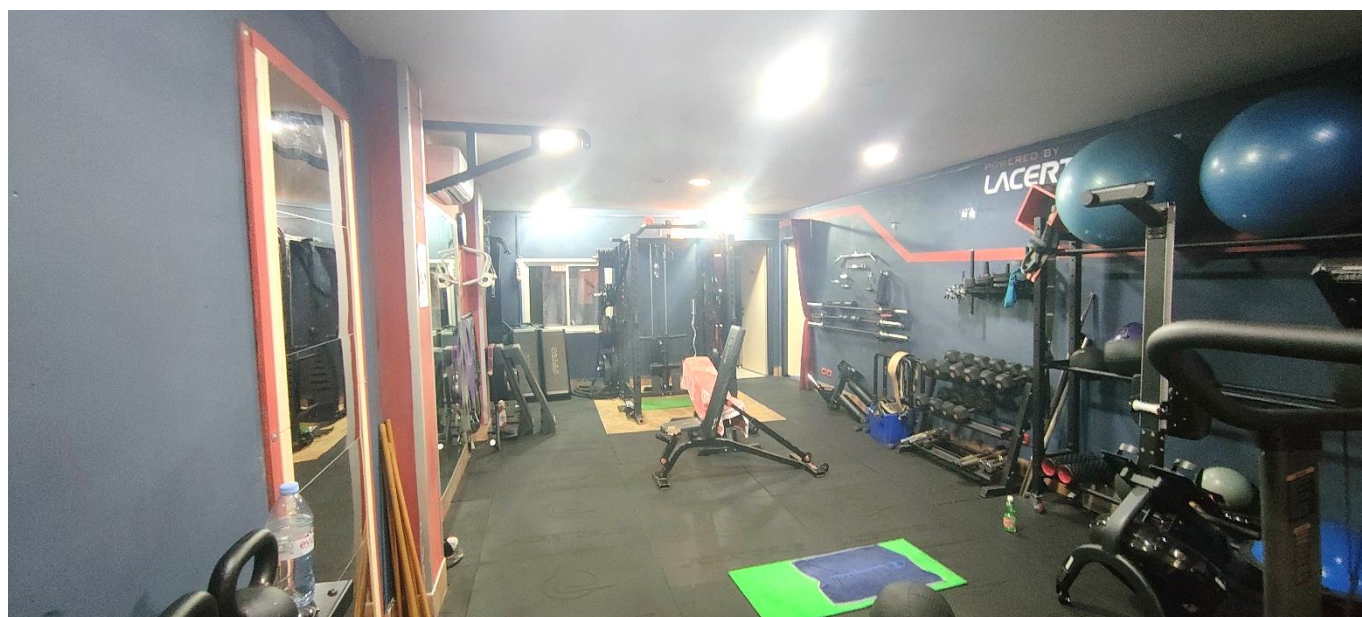


Foto 8 – Locale 2 (sala pesi/attrezzi)







Foto 9 – Locale 3 (spogliatoio)



Foto 10 – Locale 3 (spogliatoio)



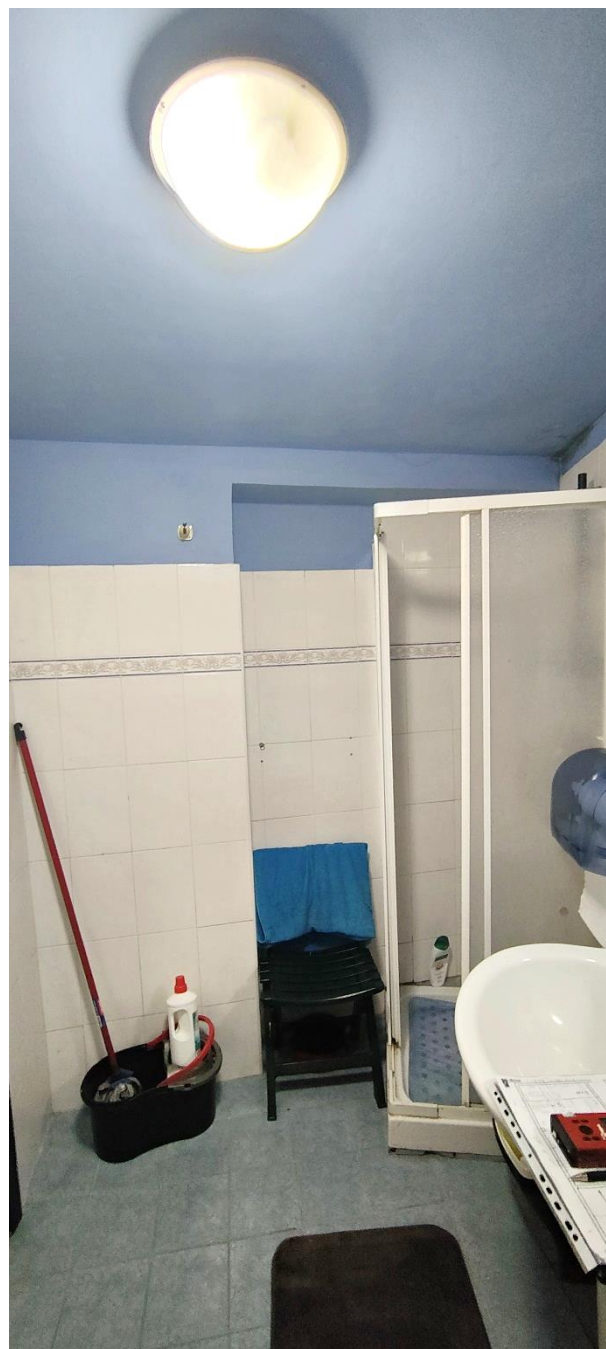
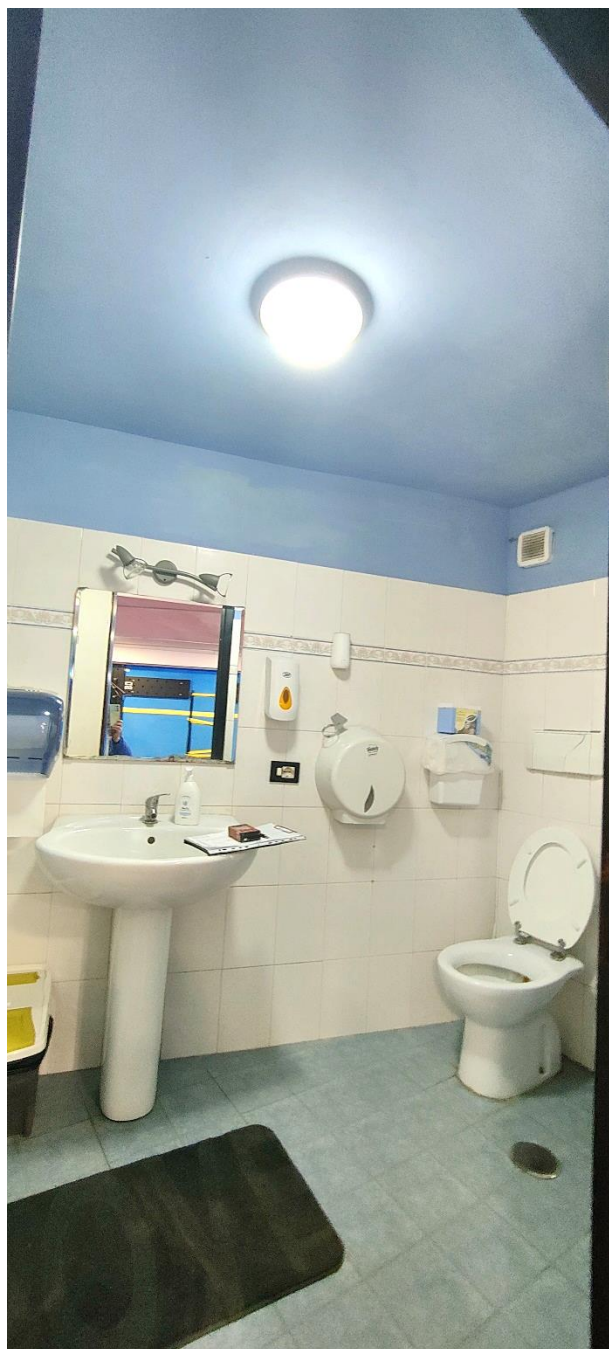


Foto 11 e 12 – Bagno interno





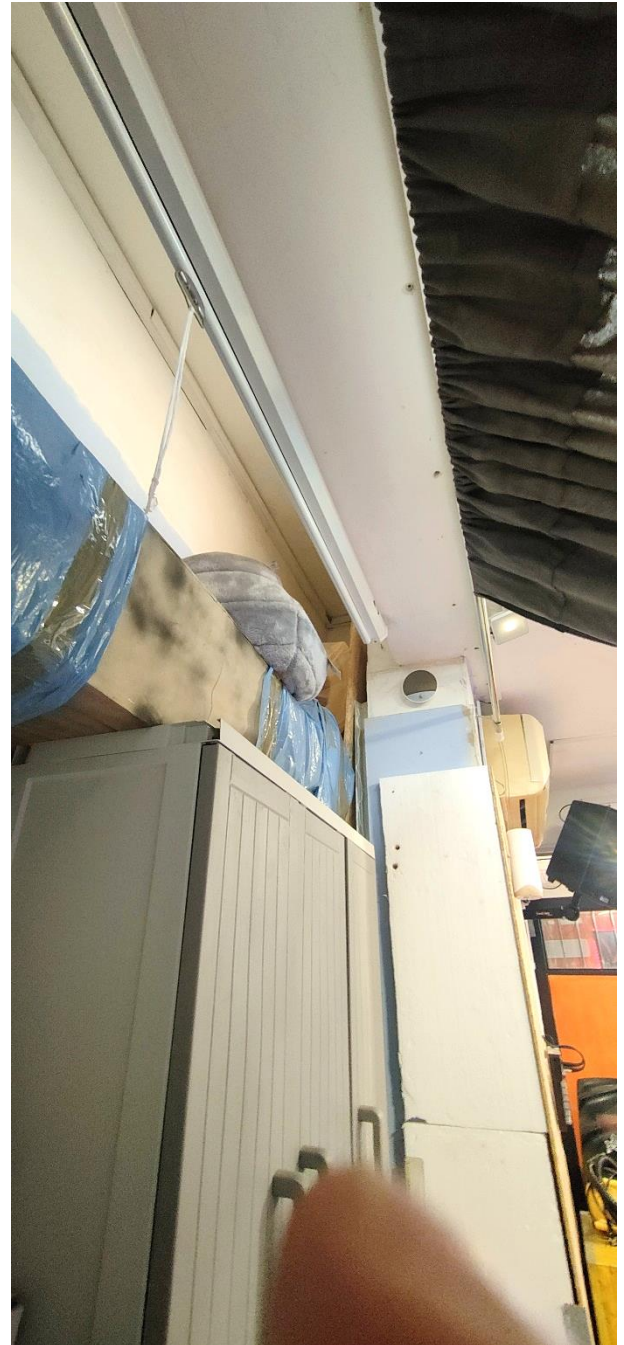
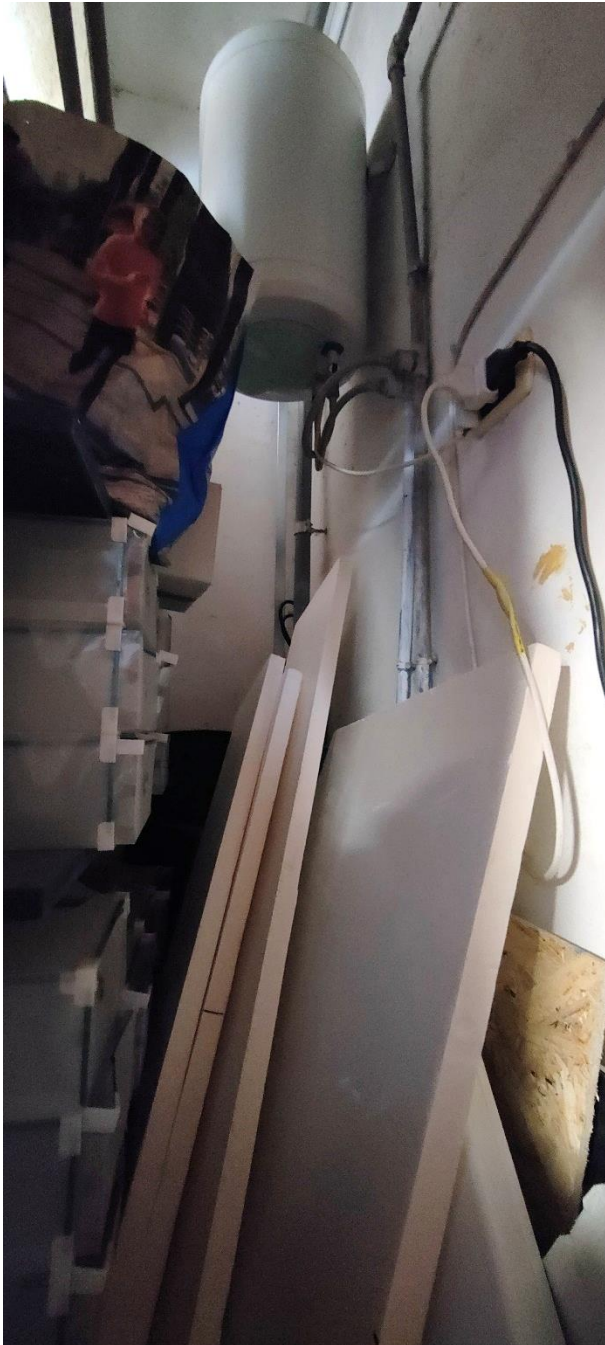


Foto 13 e 14 – Intercapedine interna accessibile





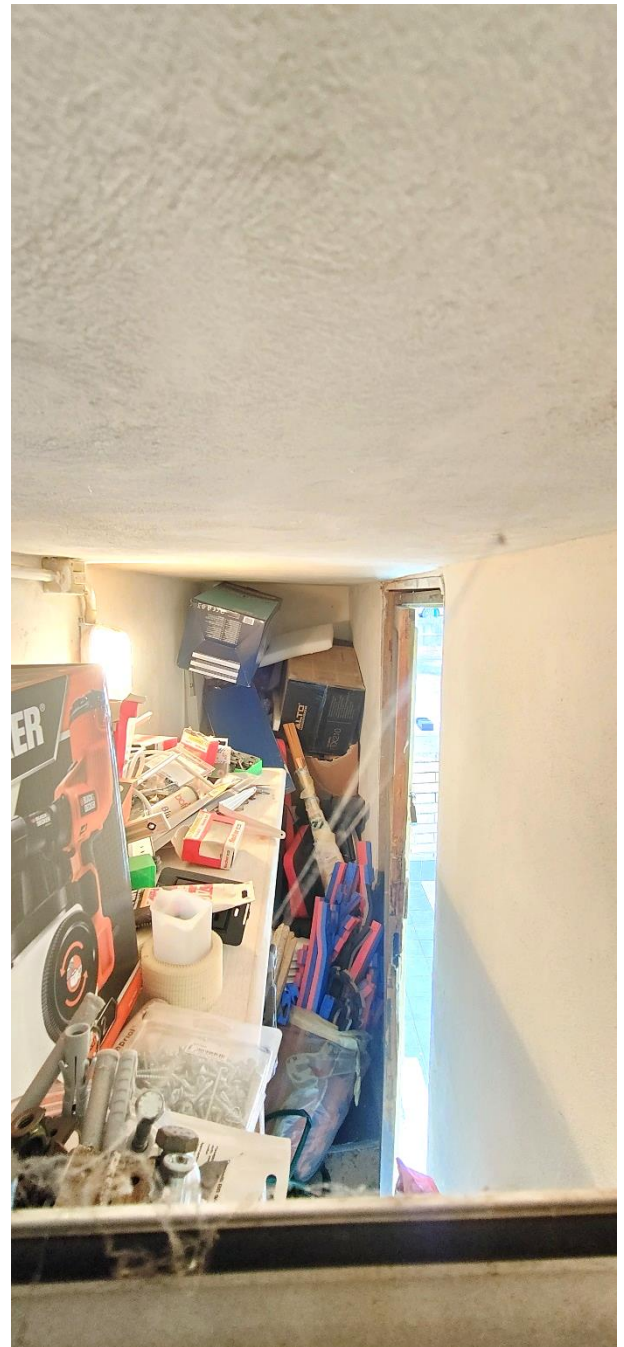


Foto 15 e 16 – annesso servizio esterno WC (attualmente adibito a cantina)

